



Flat 45 Ensign House Pegasus Way

Gillingham ME7 1GQ

Asking Price £270,000



2



2

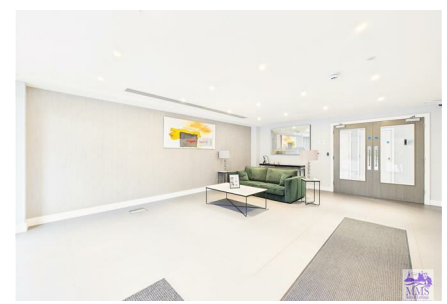


1



B

ALSO AVAILABLE TO PURCHASE ON SHARED OWNERSHIP. Nestled in the heart of Gillingham, this modern two-bedroom top floor flat on Pegasus Way offers a delightful blend of comfort and convenience. Built in 2019, the property boasts a generous 721 square feet of living space, making it an ideal choice for individuals or small families seeking a contemporary home. Upon entering, you will find a well-appointed reception room that provides a welcoming atmosphere, perfect for relaxation or entertaining guests. The flat features two spacious bedrooms, ensuring ample room for rest and privacy. With two bathrooms, morning routines will be a breeze, catering to the needs of busy lifestyles. This purpose-built flat is equipped with a lift, making access effortless for all residents. Additionally, the property comes with allocated parking, a valuable asset in this bustling area. The location is particularly advantageous, with the town centre just a stone's throw away, offering a variety of shops, cafes, and amenities. Furthermore, excellent motorway links ensure that commuting to nearby towns and cities is both quick and convenient. This flat presents a fantastic opportunity to enjoy modern living in a prime location. Whether you are looking to invest or find your next home, this property is certainly worth considering. EPC RATING B. Council Tax Band D. Lease 199 years remaining. Service charge and management fee £270 per month



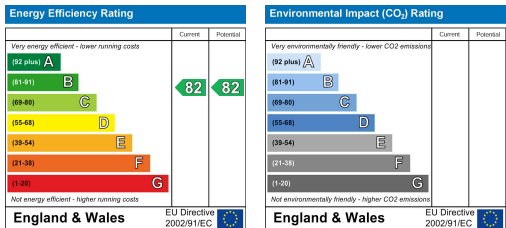
Area Map



Floor Plans



Energy Efficiency Graph



These particulars, whilst believed to be accurate are set out as a general outline only for guidance and do not constitute any part of an offer or contract. Intending purchasers should not rely on them as statements of representation of fact, but must satisfy themselves by inspection or otherwise as to their accuracy. No person in this firm's employment has the authority to make or give any representation or warranty in respect of the property.